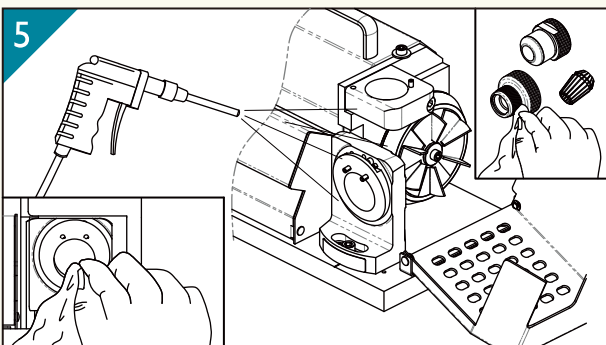
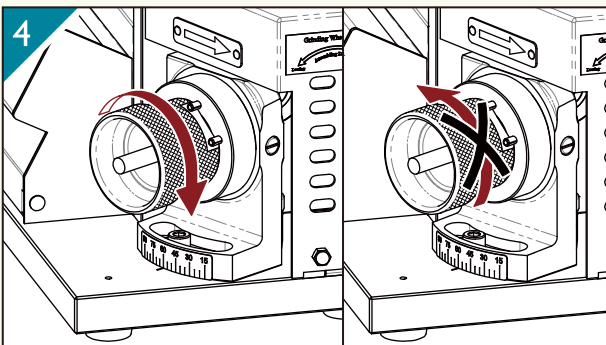
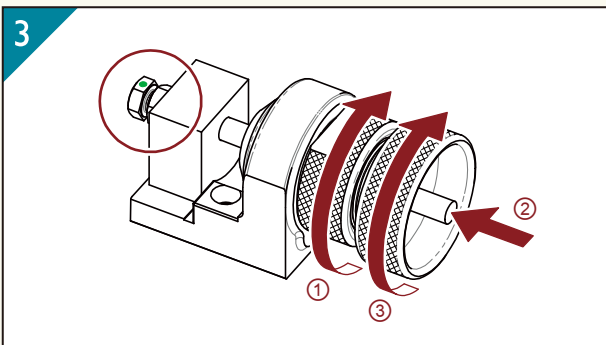
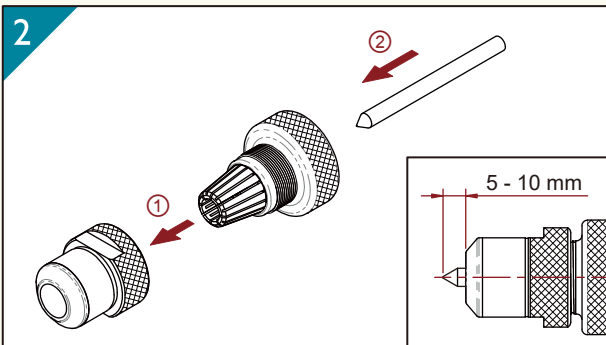
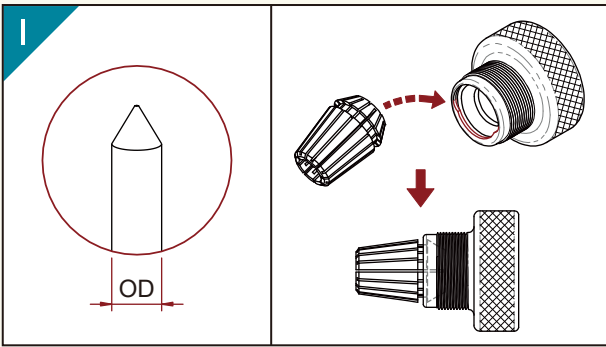




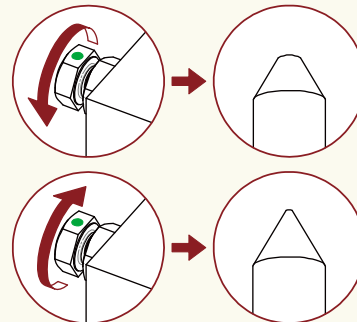
# GS-17 Tungsten Bar Resharpener



## OPERATION

1. Choose the proper collet according to the tungsten bar diameter. Put the collet into collet holder by 45° angle. (Fig. 1)
2. Screw in a little bit by clamping nut (Fig. 2 step ①), then insert the tungsten bar through the collet holder (Fig. 2 step ②) until the tungsten bar is about 5 - 10 mm out of the clamping nut, slightly screw the chuck set to tighten it a little bit.
  - \* Do not fully tighten the chuck set, keep the tungsten bar is still able to be adjusted.

3. Tungsten bar positioning:
  - ① Align the slot of the clamping nut to the pin on the positioning shelf, insert the chuck set into the positioning shelf and fit them with no gaps, then turn the chuck set clockwise until it stops by the pin.
  - ② Push the tungsten bar to the end.
  - ③ Turn the collet holder clockwise and tighten the chuck set to secure the tungsten bar.
  - ④ Gently turn the chuck set counterclockwise and take it out.
  - \* This screw (the red circle position) can adjust the grinding result, as shown below:



4. Tungsten bar grinding:
  - \* Adjust the angle of the grinding shelf before grinding procedure. (Angle adjustment available is 15° - 90°)

Turn the power switch on and wait about 10 seconds until the motor rotation is stable. Insert the chuck set into the grinding shelf, align the slot of clamping nut to the two pins on the grinding shelf, push the chuck set gently and turn it clockwise (do NOT turn counterclockwise) until the grinding noise stops.
5. Clean the ash on each grinding shelf and all the accessories, after finishing the grinding job.